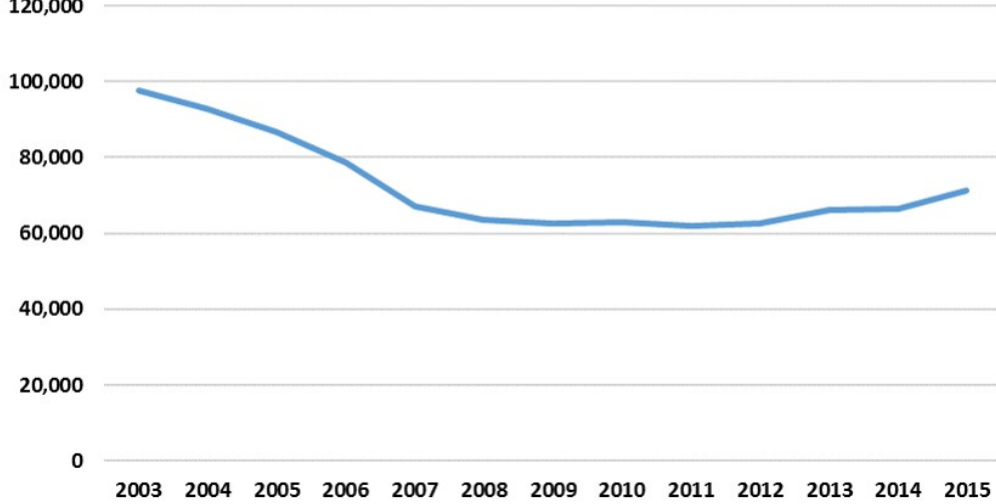


Low Income Newfoundland and Labrador Market Basket Measure

Number Below Low Income Threshold

Number Below Low Income Threshold, All Persons
Newfoundland and Labrador



In the province, the number of people below the low income threshold declined significantly between 2003 and 2008, and then remained stable until 2011. Since 2011, the number of people below the low income threshold has been increasing.

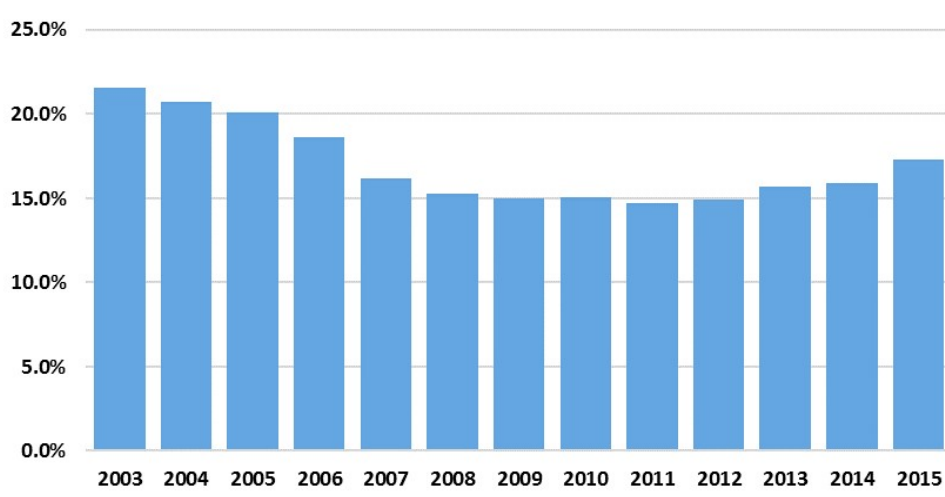
71,240 people in 2015 were below the low income threshold.

Source: Newfoundland and Labrador Market Basket Measure of Low Income. Statistics provided by Income Statistics Division, Statistics Canada, based on methodology developed by the Newfoundland and Labrador Statistics Agency.

Low Income Prevalence



Low Income Prevalence, All Families
Newfoundland and Labrador



In 2015 the risk of low income for all families in Newfoundland and Labrador was

17.3%

Prevalence of low income (risk) measures the proportion of families with income below the low income threshold in a given year.

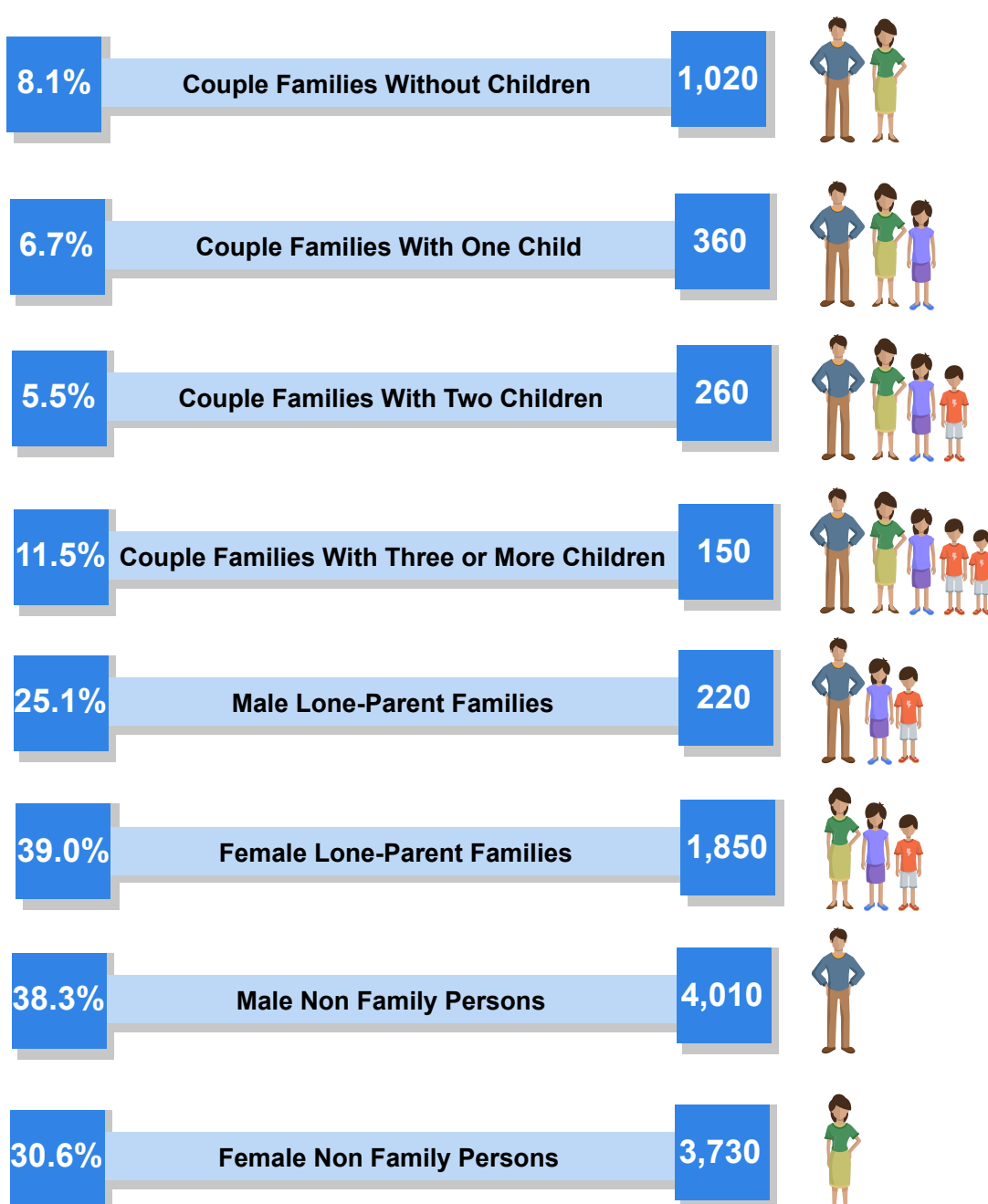
Source: Newfoundland and Labrador Market Basket Measure of Low Income. Statistics provided by Income Statistics Division, Statistics Canada, based on methodology developed by the Newfoundland and Labrador Statistics Agency.

Low Income by Family Type

St. John's, 2015

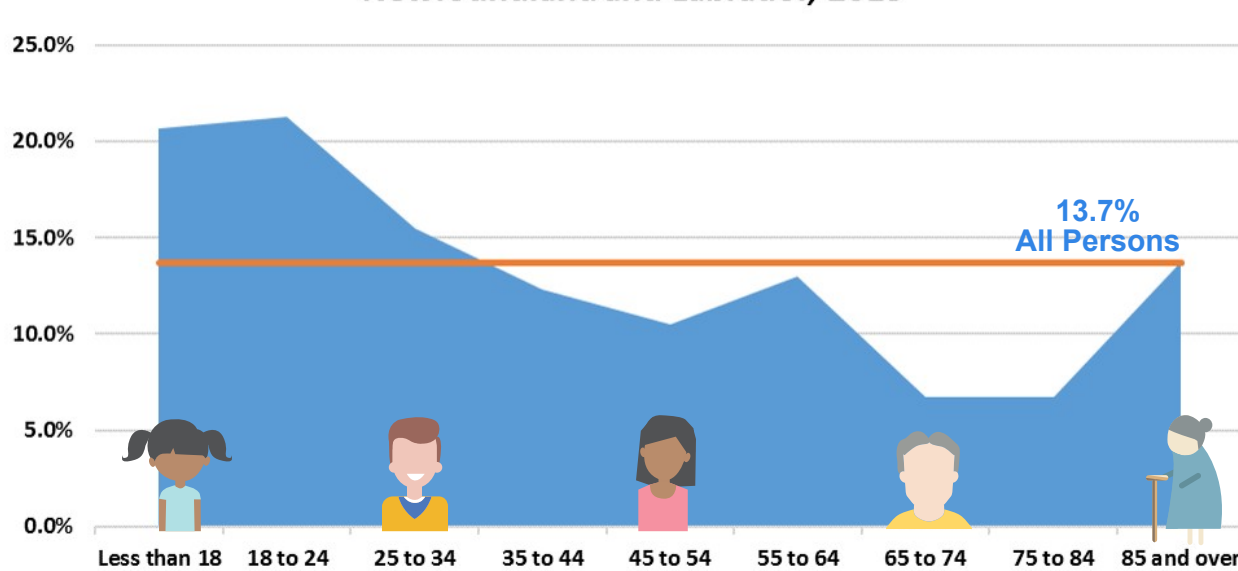
Prevalence

Number of Families in Low Income



Prevalence of Low Income by Age

Prevalence of Low Income by Age Group
Newfoundland and Labrador, 2015



Source: Newfoundland and Labrador Market Basket Measure of Low Income. Statistics provided by Income Statistics Division, Statistics Canada, based on methodology developed by the Newfoundland and Labrador Statistics Agency.

Children, young adults and older seniors were more likely to be in low income in 2015.

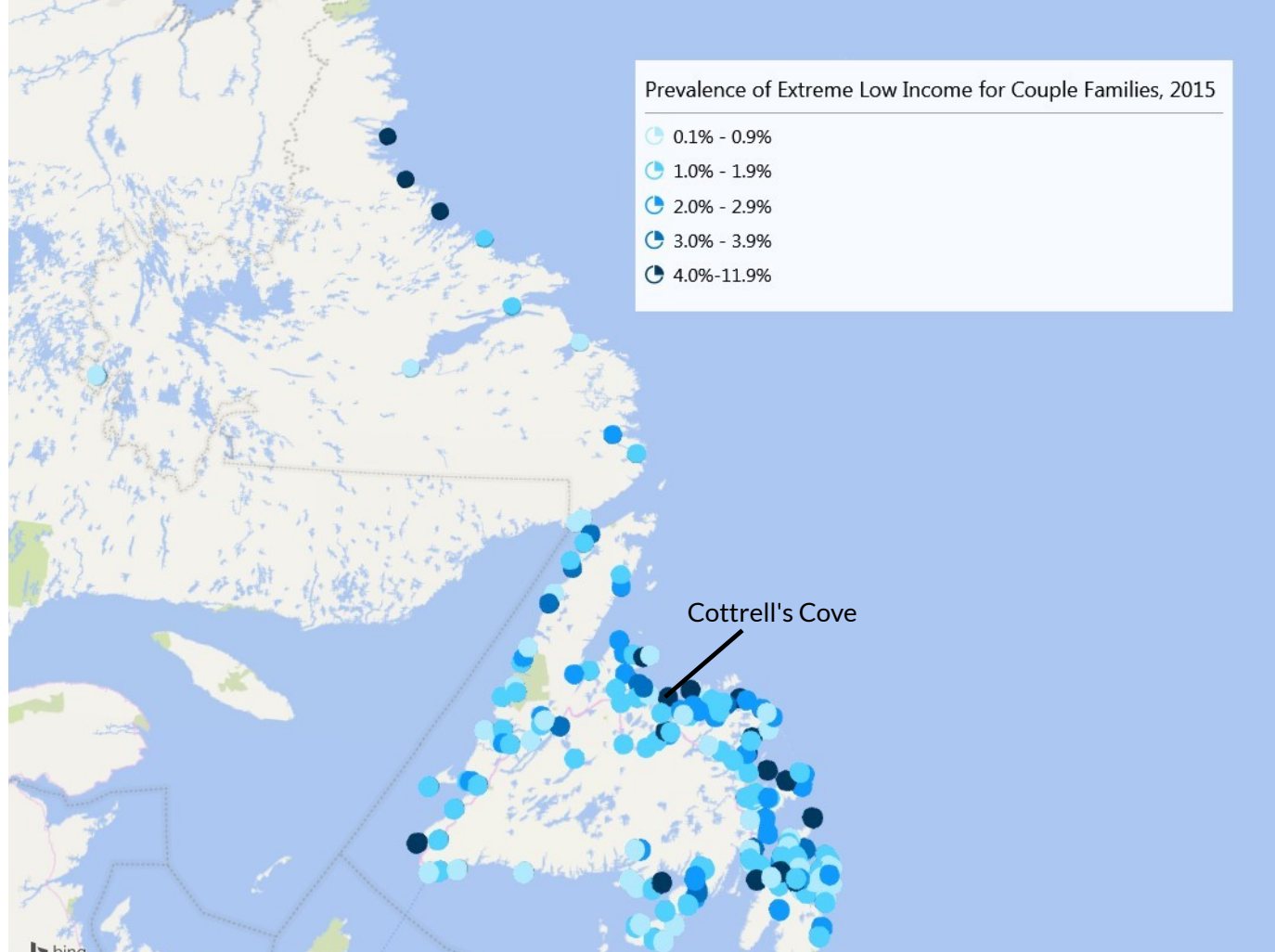
In 2015, the community of Paradise had one of the highest prevalence of low income for those aged 85 and older at 36.5% (60 people in low income).

Extreme Low Income

Extreme low income includes low income families and persons with a severe shortfall in disposable income that prevents them from affording some portion of the NLMBM standard of living (i.e., food, clothing, shelter, transportation, other goods and services). This includes all families and individuals with less than half the required disposable income to purchase the NLMBM Market Basket in their community.

Couple Families

Cottrell's Cove had the highest couple family extreme low income prevalence for 2015 at 11.9%.



Source: Newfoundland and Labrador Market Basket Measure of Low Income. Statistics provided by Income Statistics Division, Statistics Canada, based on methodology developed by the Newfoundland and Labrador Statistics Agency.