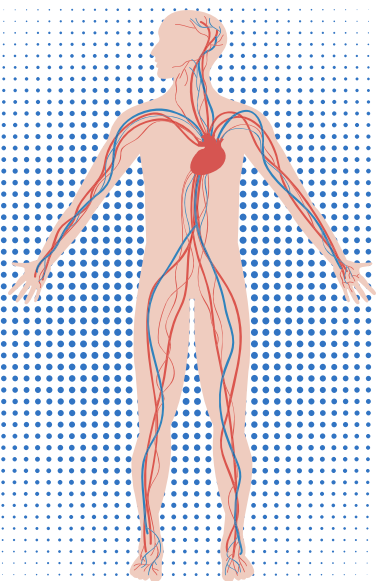
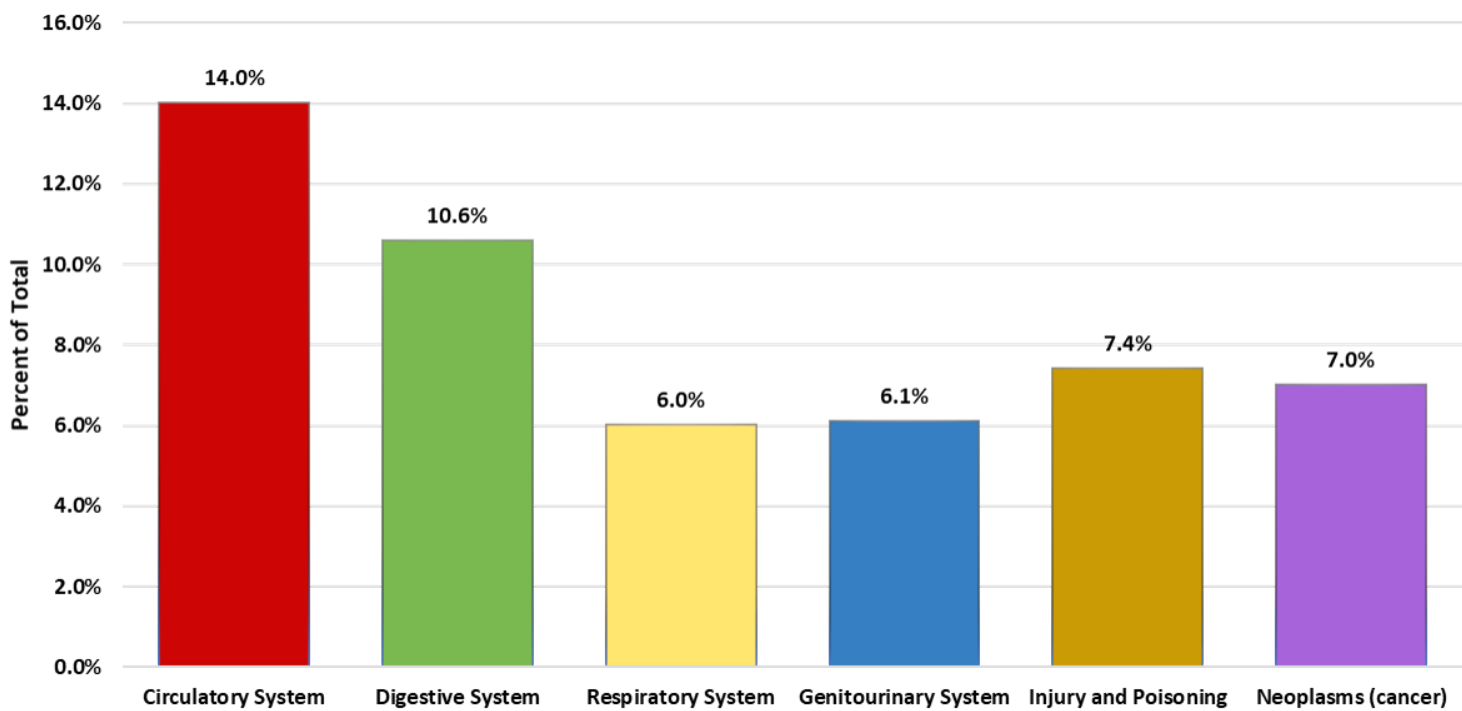


# Hospital Morbidity / Separations in Newfoundland and Labrador

Hospital morbidity is the number of separations from hospitals including discharges, transfers and deaths. Separations are based on the most responsible diagnosis which causes a patient to stay in hospital. Numbers do not reflect individual cases, as one person with multiple stays for the same condition will be counted multiple times. Figures exclude medical day care and surgical day care cases.

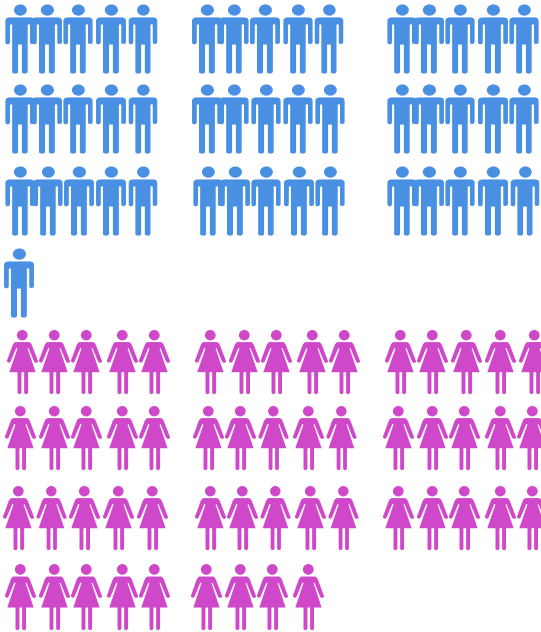
Hospital Morbidity/Separations by Diagnosis, 2020-21



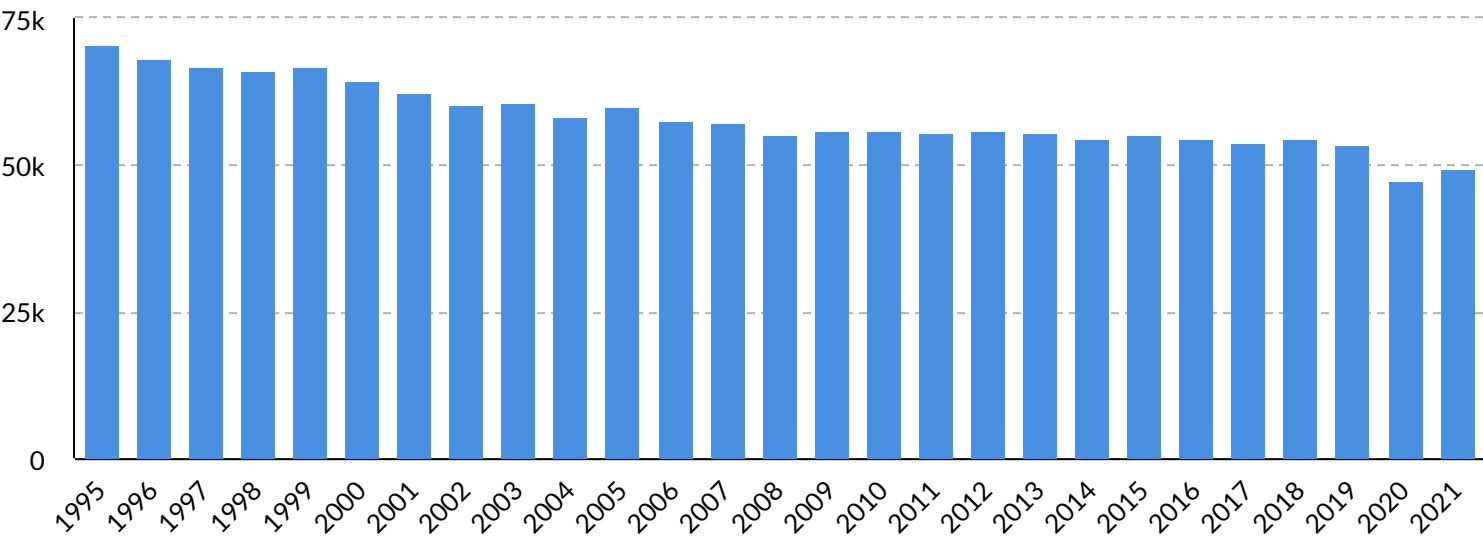
The total number of hospital morbidity/separations was **96,605** in Newfoundland and Labrador in 2020-21. Diseases of the circulatory system had the highest percentage out of all diagnosis with **14.0%**. For the province, the median age of people with this diagnosis was **71 years old** and the average days in hospital was **9.7 days**.

Of the total number of hospital separations; slightly more than half were females (54.2%).

Males had a median age 7 years older (64 years of age) than females (57 years of age).



### Hospital Morbidity/Separations by Year, Newfoundland and Labrador



Hospital morbidity/separations numbers show a decreasing trend since 1995. There has been a **30%** decrease in hospital morbidity/separations.

